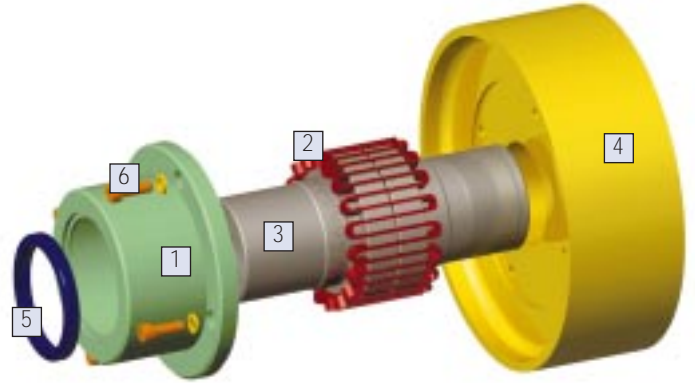
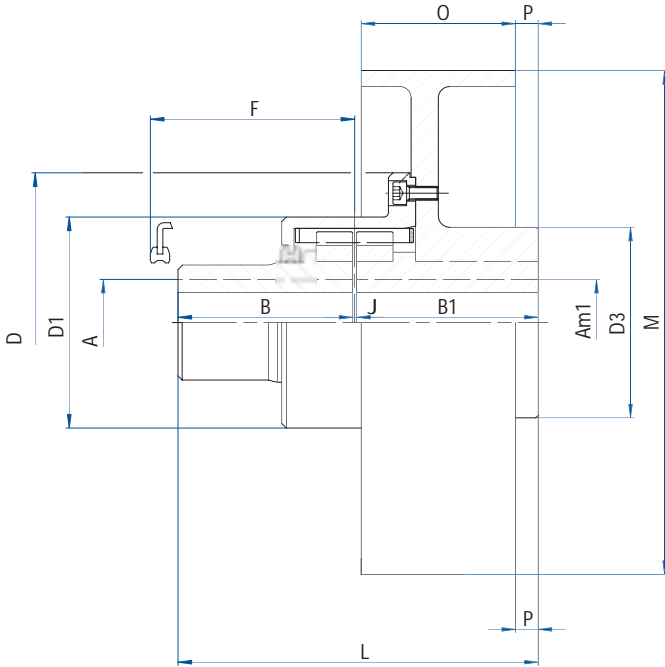


## Type CPF with Brake Drum



Item	Designation
1	Cover
2	Spring
3	Hub
4	Brake Drum
5	Seal
6	Screws

F: Clearance for grid spring assembly and removal

SIZE		0		1		2		5		9			16			28	
<b>Nominal Torque (Nm)</b>		<b>950</b>		<b>1900</b>		<b>3800</b>		<b>8500</b>		<b>12500</b>			<b>24000</b>			<b>48000</b>	
Am	Keyway	55	80	110	105	130	180	230									
Am1	Keyway	50	70	110	100	115	150	220									
Am	Shrink Fit $\diamond$	45	60	100	90	100	170	200									
	B	110	110	110	170	195	250	300	210	250	300	250	300				
	B1	110	110	110	170	195	210	250	210	250	300	250	300				
	D	170	205	250	286	340	425	515									
	D1	127	162	209	222	266	344	440									
	D3	120	160	225	220	185	255	330									
	F	120	120	120	187	187	187	190									
	J	$2^{+2}_{-0.5}$		$3^{+1}_{-1}$		$3^{+1}_{-1}$		$3^{+1}_{-1}$			$3^{+1}_{-1}$			$4^{+2}_{-2}$			
	L	222		223		223		343		393 408 448			408 448 498			479 529	
	M	200	250	250	250	350	350	450	450	530	600	530	600	750	600	750	
	O	80	90	90	90	130	130	170	170	195	210	195	210	230	210	230	
	P	0	0	0	12	0	40	0	25	15	40	15	40	70	40	70	

Weight (kg) $\diamond$		25	33	42	61	76	87	116	169	198	242	272	322	421	462	588
J (kgm <sup>2</sup> ) with brake and solid hub		0.09	0.192	0.235	0.41	0.785	0.857	2.015	3.07	5.45	2.08	6.9	10	22.5	14.1	27.7
Maximum speed (Rpm)	Without balance	2400	1910	1910	1910	1360	1360	1060	1060	900	635	900	635	510	635	510

$\diamond$  Valid only for bore opposite to the brake.

$\diamond$  Total weight with rough bore and inclusive of the brake drum.

The contents of this bulletin are subject to change without notice.